



LEOs

HAVEN

AT CHANTICLEER PARK





a special name for a special playground

LEO'S HAVEN will be the first inclusive playground to be built in Santa Cruz County. **LEO** is an acronym for *Lauren, Evelyn, and Oliver* Potts—three siblings whose greatest wish is to be able to play together at a playground. **HAVEN** describes the vision of the Live Oak community to provide children with a safe and accessible haven of play at Chanticleer Park. A playground is a child's creative classroom. They learn by interacting physically, emotionally, and socially with their peers. While a child would never be denied entrance to school, children with disabilities are routinely denied entrance onto playgrounds, as most traditional playgrounds are physically inaccessible to them. This means children like Oliver, who uses a

wheelchair, are denied access not only to their social circle, but also to the vital benefits of play. The inclusive design of **LEO'S HAVEN**, which goes beyond minimum Americans with Disabilities Act (ADA) requirements, will be a unique place where children—regardless of their abilities—can play with their friends and families. Special-needs families—who often live in a whirlwind of specialists' appointments, therapy sessions, and hospital stays—will have an invaluable resource for connecting with other families navigating similar experiences. **LEO'S HAVEN** will also provide children with the opportunity to experience and accept their peers with special needs as equals—teaching lessons of compassion, awareness, and acceptance.

LEO'S HAVEN

AT CHANTICLEER PARK



SANTA CRUZ
PLAYGROUND PROJECT

Patricia Potts MEd
founder

Robert Potts MD
founder

VOLUNTEER TEAM

Christine Betts MA RPT
physical therapist—pediatrics

Gaelyn Betts EdS
non-profit specialist

Janet Crosse
fundraising professional

Ed Gagne
realtor

Brenda Gutierrez-Baeza
interpreter/translator

Virginia Hennessey
private investigator

Charlotte Henderson CFRE
fundraising professional

Martha Jacobson
educator

Paul Jacobson
franchise owner

Stacey Kyle PhD
foundation president

Michael Rein ESQ
business/real estate attorney

Mariah Roberts MEd
educator

Amy Selover MPT
physical therapist—pediatrics

Becky Taylor
author

Diane Van Wagner MS OT/L
occupational therapist—pediatrics

PLAYGROUND DESIGN
PROJECT DEVELOPMENT
AND FISCAL SPONSOR

Shane's Inspiration
www.shanesinspiration.org

Tiffany Harris
founder/ceo

Diane Scanlan RLA
architect

Brad Thornton
senior vice president—
global project development

PARTNERS

County of Santa Cruz
Department of Parks,
Open Space, and Cultural
Services

www.scparks.com

Jeff Gaffney
director

Chanticleer Park Neighbors
Association
chanticleerpark.org

LEARN MORE

To learn more about our
volunteers and partners,
visit our website

www.santacruzplayground
project.org

indomitable spirit

There! I finally found the words that sum up what attracted and continues to attract me to the Santa Cruz Playground Project.

I've known the Potts family since 2008. Both of our families moved to the Santa Cruz County area at approximately the same time and became acquainted through our faith-based community. The Potts are an outgoing, professional couple with many diverse talents and interests. Bob is the medical director for a hospitalist group at Dominican Hospital, and Tricia is a curriculum design consultant with 15 years experience in elementary education. Their family at that time consisted of two-year-old identical twin daughters, Lauren and Evelyn.

Bob and Tricia were soon expecting a third child. However, there were complications and they knew early on that this baby would be born with significant health conditions. When Oliver was born, our community held its collective breath—it felt like we held our breath for a year or more.

What emerged from those many months of uncertainty were two parents—taking turns at Lucile Packard Children's Hospital, sitting with this adorable, smiling baby, and/or at home, parenting the twins—all the while sharing with the world their epic journey through humorous Facebook posts dotted with their indomitable spirit to give all their children the best life they could. My heart ached for them, as I knew that they must have had discouraging moments, hours, and days—but rarely did we see a glimpse of that.

As Oliver grew, he conquered the substantial odds. Yet, again, it was the family trait of an indomitable spirit that drew people to him. He smiles, he laughs, has a fantastic parade wave, and he loves. He truly enjoys life and whom-ever he encounters. Not a shy bone in him, his “can-do” attitude is infectious.

So, Bob and Tricia presented the idea to me to form an organization to help create an inclusive playground where *all children and all adults* (regardless of ability) could play

in Santa Cruz County. Watching the excitement of their three precious children also learn of the idea—coupled with the magnetism of the “Potts Family Indomitable Spirit” was overpowering! They could count me in! In the following pages, you will discover their passion and dedication through countless hours meeting and working with government, special needs groups, and others to see this project through to fruition.

Our LEO'S HAVEN volunteers are busy people: working professionals, parents, spouses, and grandparents. *Why have we chosen to devote our spare time and midnight hours to this inclusive playground project?* The answer is easy. We are simply inspired. We are inspired by the optimism of the families you will meet in this magazine who face challenges that most of us rarely encounter. We are inspired by governing officials who have acknowledged the need and pledged their support in making this happen. We are inspired by community organizations that recognize they can have an impact in bettering their community. We are inspired with the thought that there is not much in this world that is equal or fair—but equal “play” is one thing that is possible!

It is my great pleasure to introduce you to the Potts Family—Bob, Tricia, Lauren, Evelyn, and Oliver—and a host of others who are making the vision of LEO'S HAVEN AT CHANTICLEER PARK a reality for all. It is my sincere hope that you are inspired by the indomitable spirit that continues to carry us to that end.



Charlotte

Charlotte Henderson CFRE
Editor, Volunteer

a siblings' wish to play together

In the Fall of 2013, I took my three children to a playdate at a local park. Oliver, who was 3-years-old, had just gotten his first wheelchair and I was eager to see how he would navigate the world with his wheels. Almost immediately we had a problem—his chair was unable to go over the grass and wood chips we needed to cross in order to reach the other children. I tried my best to get the wheelchair over the landscaping, but after a few yards, I realized it was futile. We watched from a distance as all the other children ran around happily playing in the late afternoon sunshine. For a little boy who had already overcome so very many obstacles and hardships in his life, the thought of his childhood spent on the sidelines—unable to play with his sisters and friends—was unbearable. As I struggled to keep my composure in front of the other parents, I wondered, *“How can Oliver play at a playground like any other kid?”* That day I didn't have an answer to that question, and it broke my heart.

A few months later, Bob encouraged me to take the kids down to Salinas for the grand opening of Tatum's Garden—the first inclusive playground in the Monterey Bay area. Inclusive playgrounds are specifically designed so *all children*—regardless of ability—can play side-by-side. It was amazing! For the first time, Lauren, Evelyn, and Oliver were able to play together without barriers. When it was time to leave, my children begged to know when we could come back. Once again, my heart fell. Tatum's Garden was over an hour's drive away—too far to visit on a regular basis. All parents juggle the frenetic schedules of childhood: school, lessons, appointments, sports. Add to that a special-needs family's frequent doctor appointments, specialized education sessions, and therapy appointments—there is simply not enough time to take a whole day to drive to the nearest inclusive playground. It was then that I knew—*we needed a playground like this in our community.*

A lot has happened since I realized the problem wasn't about Oliver's disability, but rather it was about inclusion and accessibility. Many volunteers and organizations have worked diligently to get to where we are now—ready to launch the fundraising phase of this project. As you continue to read about the impact this playground will have in our community and you see the beautiful, conceptual designs, I hope you will feel compelled to take action. It would be an honor to work together so all our children will have the opportunity to learn, develop, and play together at LEO'S HAVEN.

Thank you!



Tricia Potts

Co-Founder

Santa Cruz Playground Project



chanticleer park history

the community

LEO'S HAVEN AT CHANTICLEER PARK exemplifies the very best of what a local community can create when working collectively towards a common goal. Local mommy-and-me groups, University of California, Santa Cruz (ucsc) service learners, inclusive play advocates, community gardening proponents, bike enthusiasts, and dog lovers—these are but a few of the partners who make up the magic that is the Chanticleer Park community. Through their efforts, the park has grown from 4½ acres of fenced off land to the living public space it is today.

the land

Chanticleer Park is located in Live Oak, at the heart of Santa Cruz County. An unincorporated community, home to the third largest population in the county, Live Oak is richly diverse in ethnicity, mobility, socio-economics, and educational experience. Live Oak is home to higher-than-average numbers of families with small children, people living in poverty, elderly residents, and people with a disability—but there is no developed public park within the recommended one-half-mile around the Chanticleer Park neighborhood.

the history

In the early 2000s, the local redevelopment agency (RDA) worked to meet the needs of our Live Oak community. In collaboration with residents, the RDA purchased the parcels that make up the 4½-acre park site and tasked SSA Landscape Architects to design a beautiful master plan. Unfortunately, when the California fiscal crisis hit in 2010, redevelopment agencies across the state were defunded by the governor, and the money to complete this public space disappeared. After Chanticleer Park lost its funding, concerned neighbors formed the Chanticleer Park Neighbors Association and joined forces with the County of Santa Cruz Parks Department to prevent the land from being sold off. With support from Supervisor John Leopold, an interim usage plan to keep the park open as a public resource was developed, featuring the bicycle pump track, off-leash dog run, and community garden. However, a playground for the community seemed beyond the reach of this grassroots group.

the next chapter

In 2014, the Santa Cruz Playground Project presented their idea for an inclusive playground to the Chanticleer Park Neighbors Association. The response was a unanimous vote of support. In 2015, the County of Santa Cruz Board of Supervisors voted to support a public-private partnership between the county, Shane's Inspiration, the Santa Cruz Playground Project, and the Chanticleer Park Neighbors Association to design, fundraise, and build LEO'S HAVEN AT CHANTICLEER PARK as part of a Phase 1 Development of the Chanticleer Park master plan. The Santa Cruz Playground Project will raise approximately \$1.93 million dollars for the playground, bathrooms, and a parking lot. Shane's Inspiration will provide a service grant to design LEO'S HAVEN. The county—in addition to the \$3.6 million already spent acquiring the properties and master planning—has allocated \$650,000 for further design and infrastructure costs. The parks department has also submitted both state and federal grant applications and will continue to actively pursue additional funding options for these vital infrastructure components (i.e., demolition and grading).

Moving forward together, LEO'S HAVEN AT CHANTICLEER PARK has become our call to action. The knowledge that **#AllKidsNeedToPlay**, and all people deserve access to public green space propels this project forward with the energy and determination needed to bring the next chapter of the Chanticleer Park story to life.



Mariah Roberts MEd
Mom, Teacher, Designer, Fiddler
DIRECTOR Chanticleer Park Neighbors Assoc.
CHAIR Santa Cruz County Parks
and Recreation Commission



Shane's Inspiration is a 501(C)(3) non-profit organization who serves as a fiscal sponsor for LEO'S HAVEN and is also donating their design services.

www.shanesinspiration.org

Shane's Inspiration—an international organization whose vision is to foster a bias-free world for children with disabilities—partners with communities worldwide to create inclusive playgrounds and programs that unite children of all abilities.

In 1997, two parents lost their newborn son, Shane, to a degenerative condition. Searching for a way to honor his brief life, they rallied the Los Angeles, CA, community to create the first fully-inclusive playground in the Western United States: *Shane's Inspiration*, which opened in 2000 in Griffith Park.

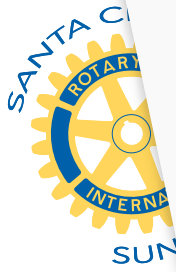
Today, a single playground has grown into a powerful inclusion movement. The organization has 60 inclusive playgrounds open nationally and internationally, includ-

ing: Sochi, Russia; Jerez, Mexico; Cuenca, Ecuador; British Columbia; and Israel. Almost 100 additional projects are in development.

Once the playgrounds open, a Shane's Inspiration program team supports the implementation of a family play club and an ability awareness program, *Together, We Are Able*. These programs transform the playground into a classroom where children—with and without disabilities—learn to see beyond their differences and discover their shared humanity.

Shane's Inspiration is honored to partner with the Santa Cruz Playground Project and the County of Santa Cruz to support LEO'S HAVEN through playground design, development, and social inclusion programming.

Letters of support



Santa Cruz

The R...
play...
pro...
W...
ti...



JOHN LEOPOLD
FIRST DISTRICT

ZACH FRIEND
SECOND DISTRICT

RYAN COONERTY
THIRD DISTRICT

GREG CAPUT
FOURTH DISTRICT

BRUCE MCPHERSON
FIFTH DISTRICT

County of Santa Cruz

BOARD OF SUPERVISORS

701 OCEAN STREET, SUITE 500, SANTA CRUZ, CA 95060-4069
(831) 454-2200 • FAX: (831) 454-3262 TDD: (831) 454-2123

May 3, 2016

Dear Santa Cruz Playground Project,

I am writing in support of the efforts to build Santa Cruz County's first all-inclusive playground located at Chanticleer Park. Your support to build Leo's Haven furthers the amazing partnership that has been a hallmark for the park, and will ensure that it is useful and enjoyed by all members of the community.

Chanticleer Park is a special place that has been brought to life with the assistance of the Chanticleer Park Neighbors Association and their tireless dedication to transforming the land into a productive recreational space. The addition of the Santa Cruz Playground Project deepens that neighborhood bond by furthering the community's roots in this park. You have already provided incredible support in helping maintain the park, and you have breathed new life into our plans to have a children's playground at the site.

With your assistance, you are helping transform Chanticleer Park into a recreation destination for the entire county. Through the support of donors, we can realize the dream of turning this urban space into a place where children of all ages and abilities can play together and enjoy each other's company without restrictions. It represents community values as an inclusive community and will serve as a model for other parks and community spaces to be configured for complete access.

I sincerely appreciate your leadership in making Leo's Haven a reality. With your hard work, and with the support of your donors, we will be witnessing miles of smiles from who will come and play at Leo's Haven. Thank you for your leadership and your dedication to the youth of our community.

Sincerely,

JOHN LEOPOLD, Supervisor
First District



JL:fn



santa cruz sunrise
rotary club

From the outset, our club has supported this project in whatever way possible. We applied for and received a grant from Rotary International to help create interpretive signage, and LEO'S HAVEN is the designated recipient of this year's Rotary Firecracker race on July 4th. This inclusive playground will be a long-lasting asset to our community, and we are very excited about the opportunities that lie ahead.



Karen Gosling PRESIDENT
2015-2016



Central California

easter seals
central california

Easter Seals Central California is truly honored to have been doing everything we can since LEO'S HAVEN's inception! LEO'S HAVEN perfectly embodies the mission of Easter Seals Central California to provide "innovative services for children and adults with disabilities and their families so they may actively participate in the community with the freedom to choose how they live, learn, work, and play." It also offers a chance to once again bring together all members of the Santa Cruz community.



Sincerely,

Tom Conway PRESIDENT / CEO



live oak school district

On behalf of Live Oak School District students, thank you for the proposal to build a fully inclusive playground at Chanticleer Park. It would be of great benefit to our students and the Live Oak community.

Sincerely,



Tamra Taylor SUPERINTENDENT

county of santa cruz
public health division
california children's services

LEO'S HAVEN will allow disabled adults to play with their children and grandchildren. As a program of pediatric therapists, we know the therapeutic value of play. In fact, most therapy we provide requires us to incorporate play. LEO'S HAVEN will create an environment that promotes play and the development it fosters. Your support will help provide a unique and valuable experience for an underserved segment of our population.

Sincerely,

Dave Kramer-Urner PT

children's medical services manager

When we think of a disabled person solely in terms of what they cannot do, we reduce that person's humanity, worth and capacity to have a good life.

— Christopher Krentz

#AllKidsNeedToPlay



Each child in our community does better when all children around us are doing better. LEO's HAVEN allows an opportunity for all children to do better—a place where a child's course isn't defined by limitations but by the

inclusiveness of a community and access to equal opportunity. This inclusive playground will provide children, and their parents, a place of fun, a place of refuge, and place of opportunity that's long overdue.

Zach Friend COUNTY OF SANTA CRUZ
supervisor, second district



live oak education foundation

I am writing to you to express my unequivocal support for an inclusive playground at Chanticleer Park. Though my children have no disabilities, I want them to have opportunities to engage and play with children who do in order to foster their awareness and understanding of disabilities as well as an appreciation for individual differences.

Sincerely,

Stacey Kyle PhD
live oak mom and founding president



JEFF GAFFNEY
DIRECTOR

County of Santa Cruz

DEPARTMENT OF PARKS, OPEN SPACE & CULTURAL SERVICES
979 17TH AVENUE, SANTA CRUZ, CA 95062
(831) 454-7901 FAX: (831) 454-7940 TDD: (831) 454-7978

Dear Santa Cruz Playground Project and Supporters,

To fund and build the playground, a partnership was formed in June 2015 between the Santa Cruz Playground Project, Santa Cruz County Parks, Chanticleer Park Neighbors Association, and Shane's Inspiration. We are going to need a lot of support from sponsors and the community to see this vision become a reality. The playground will be a legacy we help create for our community and we are excited to have this chance to collaborate with such great partners. Thank you in advance for your consideration of LEO's Haven, the **VERY FIRST** inclusive playground in Santa Cruz County.

Sincerely,

Jeff Gaffney
Director

♥ the heart of it

When my first child, Francisco, was a toddler he wanted to go to the playground near our house. The playground had swings and a colorful structure with slides—one of which was an orange tube with sand around it to protect the children. I was using a manual wheelchair at the time and it was impossible for me to roll in the sand. Francisco would cry and beg for me to push him in the swing. It was heartbreaking every time we visited the park. One day, I decided to jump in the sand and pull myself closer so I could push him in the swing. His laughter was contagious and helped me to ignore the looks of pity and disgust from the other parents.

My second child, Natima, was born seven years later. The previous playground at the Loudon Nelson Community Center/Laurel Park had a pressed rubber mat around the slides and all the way to one of the swings—which enabled me to take the children to those playground elements. It also had a bridge that a person in a wheelchair could access by rolling over the grass. I was able to push my daughter in the swing.

By the time Lolita was born, my older children were ages four and eleven. The Anna Jean Cummings Park was about half a mile from our home. The park had some accessible areas, but Lolita preferred the parts where I could not get to her. So, I learned to take one of her older siblings with me so they could help her play in areas I could not access.

My children are now grown—and it's time for me to take my two grandchildren, ages six and four, to the park. My search for accessible playgrounds is not over. I have just begun the second chapter of this challenge in my life. I wholeheartedly endorse LEO'S HAVEN, as it will put an end to this lifetime search and bring me immeasurable joy when my little ones say, "Grandma, will you please take us to the park to play?"

Ernestina Saldana CHAIR

Santa Cruz County Commission on Disabilities



playground site plan

LEO'S HAVEN AT CHANTICLEER PARK has been designed by Diane Scanlan, a Landscape Architect and Director of Design at Shane's Inspiration. Her goal was to create an innovative, interactive, and inclusive play space so children of all ages and abilities can play together. The design is sensory-rich, age-appropriate, and supports multi-generational play for all. The imaginative farm theme was inspired by the historic nature of the Chanticleer Park neighborhood. This beautiful design will truly make LEO'S HAVEN a unique play destination for children in Santa Cruz County and its surrounding communities.



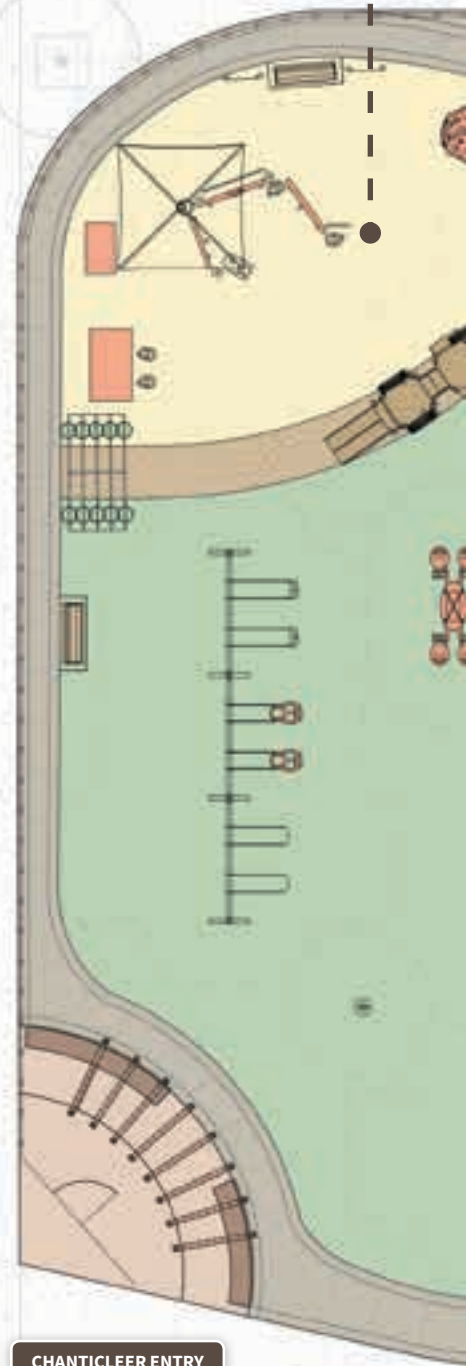
INCLUSIVE PLAYGROUND
FARM THEME AGES 0-12



LEO'S HAVEN is part of Chanticleer Park which has an approved master plan designed by SSA Landscape Architects. The Santa Cruz Playground Project is focused on raising funds for the playground, restrooms, supporting sidewalks, and the main parking lot. Additional infrastructure improvements to support the playground and other park elements are being pursued by the County of Santa Cruz and the Chanticleer Park Neighbors Association, but are beyond the scope of this sponsorship magazine.

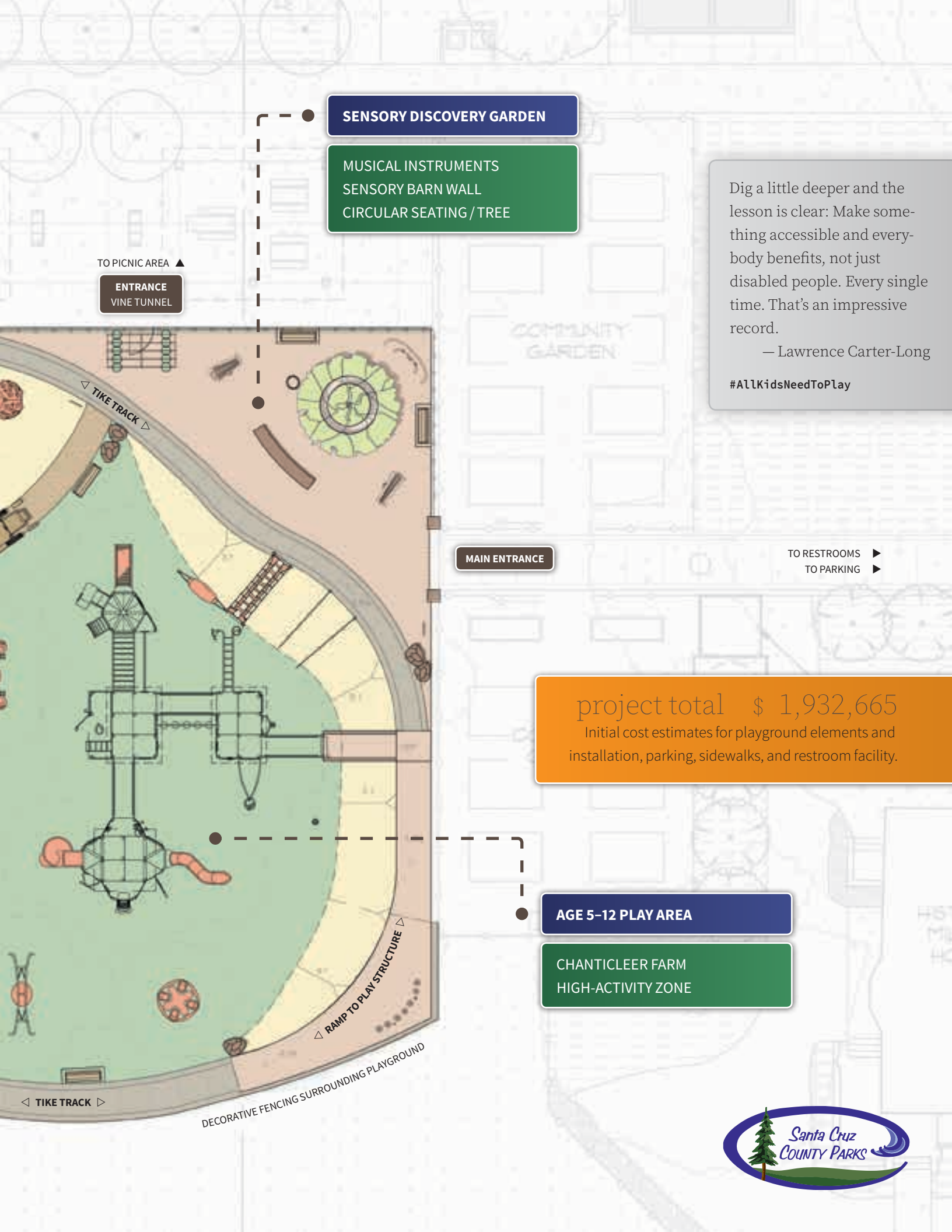
AGE 0-5 PLAY AREA

TRACTOR
LITTLE FARMER'S MARKET
COZY DOME
MUSIC STATION
ANIMAL FARM



TO CHANTICLEER AVENUE

CHANTICLEER ENTRY
SHADED SEATING



SENSORY DISCOVERY GARDEN

- MUSICAL INSTRUMENTS
- SENSORY BARN WALL
- CIRCULAR SEATING / TREE

Dig a little deeper and the lesson is clear: Make something accessible and everybody benefits, not just disabled people. Every single time. That's an impressive record.

— Lawrence Carter-Long

#AllKidsNeedToPlay

TO PICNIC AREA ▲
ENTRANCE
 VINE TUNNEL

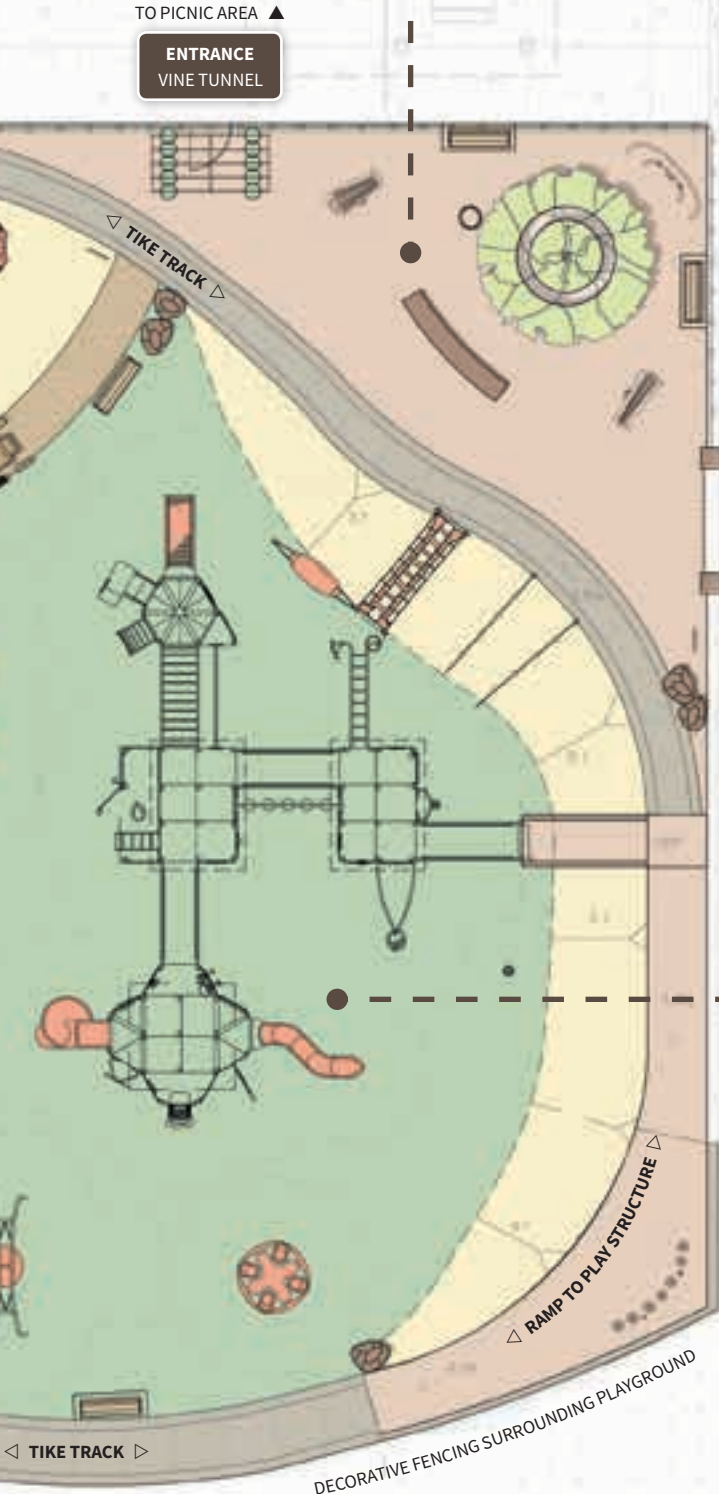
MAIN ENTRANCE

TO RESTROOMS ►
 TO PARKING ►

project total \$ 1,932,665
 Initial cost estimates for playground elements and installation, parking, sidewalks, and restroom facility.

AGE 5-12 PLAY AREA

- CHANTICLEER FARM
- HIGH-ACTIVITY ZONE



SENSORY DISCOVERY GARDEN

www.santacruzplaygroundproject.org

section total \$ 175,075

A short walk (or roll) from the parking lot will bring children to the main entrance of LEO'S HAVEN where they are welcomed into the Sensory Discovery Garden. This area is filled with musical instruments at ground level which provide easy access for children of all ages. These elements are a wonderful activity for children with autism or attention-deficit/hyperactivity disorder (ADHD) and provide opportunities for auditory processing.

A custom-designed interactive sensory barn wall provides tactile play opportunities—which benefit children with sensory, visual, and auditory disabilities. The doorway is wheelchair accessible, and children can engage in face-to-face play at the window.

A decorative circular planter bench will offer parents a chance to relax under a shaded tree canopy, and if it is time for a snack, exit the playground via the vine tunnel to the picnic pavilion area.



SENSORY DISCOVERY GARDEN — 3D MOCKUP



Primary Entry Gateway	\$ 19,650
Circular Planter with Tree	\$ 18,600
Sensory Barn Wall	\$ 107,000
Tuned Drums	\$ 3,650
Swirl Chimes	\$ 6,650
Animato Metallophone	\$ 5,150
Vine Tunnel	\$ 2,850
Concrete Surfacing	\$ 11,525



Sensory Barn Wall exterior



A farmers' market with whimsical chicken seats awaits in the AGE 0-5 PLAY AREA to provide interactive and imaginative face-to-face play. At the Animal Farm, elevated beams, rocks, and barrel steppers will hone lateral balancing and climbing skills while a shade canopy offers respite from the sun. Children can scoot up the stairs on the tractor, and go down the slides, or scoot through the tunnel to exit the front. Too Small to Fail panels engage children to interactively talk with their friends and families to develop early learning literacy skills. If a child needs to "get away from all the activity" they can easily escape to the quiet Cozy Dome or hide under the vine tunnel. A scaled down Preschool Music Station provides smaller children the experience of sound play, away from the crowds gathered at the Sensory Discovery Garden.



AGE 0-5 PLAY AREA — 3D MOCKUP

Music Station	\$ 7,540
Marketplace w/ 2 Chicken Seats	\$ 48,980
Cozy Dome	\$ 4,855
Baby Lamb Sculpture	\$ 8,775
Animal Farm	\$ 36,400
Tractor	\$ 43,750
Too Small To Fail panels	\$ 4,350
Vine Tunnel	\$ 2,850
Resilient Surfacing	\$ 40,790
Interior Concrete Circulation	\$ 10,220



AGE 0-5 PLAY AREA

www.santacruzplaygroundproject.org

section total \$ 208,510

AGE 5-12 PLAY AREA

www.santacruzplaygroundproject.org

section total \$ 681,230

CHANTICLEER FARM

Welcome to the 5-12 Play Area offering fun and challenging inclusive activities for all children. A secondary entrance off Chanticleer Avenue beckons with tiled seats and a cooling overhead trellis giving children a little space before joining in the active play. The largest feature is the Chanticleer Farm Play Structure designed with corrugated steel roofing and recycled plastic planks purposefully replicating a historic Live Oak farm. Fully accessible via ramps, the multi-level play structure offers many music and sensory activity panels for children to explore. Slides are accessible via wheelchair transfer stations. Resilient surfacing will cushion any unexpected falls. A gentle slope with rubberized pods will allow children to climb and explore. Rope pulls develop gross motor skills while balancing can be practiced on the boogie board or the rickety climber.



AGE 5-12 PLAY AREA - 3D MOCKUP



Chanticleer Farm Total

\$ 550,735

Chanticleer Entry	\$ 17,200
Chanticleer Farm Play Structure	\$ 346,245
Pagoda Bell, Contrabass Chimes	\$ 10,950
Resilient Surfacing	\$ 126,160
Interior Concrete Circulation	\$ 10,220
Concrete Ramp to Play Structure	\$ 17,250
Rickety Climber	\$ 8,960
Pods on Slope	\$ 6,250
Boogie Board	\$ 2,500
Rope Pull (2 ct.)	\$ 5,000





HIGH ACTIVITY ZONE (AGES 5-12)

The High Activity Zone contains popular play equipment for children to rotate, swing, spin, and rock—all movement opportunities that promote physical activity, gross motor development skills, and provide vestibular and proprioceptive stimulation. The Oodle Swing, the Omnispinner, and the 4-person Wee-Saw all provide opportunities for multiple participants to play together. The three-bay swing set is designed with two belt seats, two accessible molded high-back seats, and two bucket seats for children of all abilities. Children in wheelchairs will enjoy maneuvering between activity zones along the Tike Track encircling the entire playground.

High-Activity Zone Total

\$ 130,495

Omnispinner	\$ 8,300
Stand-up Spinners (2 CT.)	\$ 3,565
Wee-Saw	\$ 10,770
Swings (bucket/highback/belt)	\$ 8,100
Oodle Swing	\$ 5,720
Resilient Surfacing	\$ 73,600
Interior Concrete Circulation	\$ 20,440



SITE AMENITIES

www.santacruzplaygroundproject.org

amenities total \$ 157,850

parking lot/restroom total \$ 710,000

Located around the playground are site amenities including accessible benches, trash receptacles, and shade trees. A custom 4' high thematic fence will run along the playground's perimeter for children's safety. Sidewalks from Chanticleer Avenue and the main parking lot provide easy access to the playground. The off-street parking lot will have 33 parking spaces, including two accessible spaces. The entrance will be located off the intersection of Chanticleer Avenue and Chanticleer Lane between the existing Miller House and the northern park property line. The parking area will have improved drainage and surfacing. The restrooms will include three individual accessible family restrooms and two accessible drinking fountains, and storage space for park maintenance equipment.



Decorative Fence	\$ 107,000
Benches and Litter Receptacles	\$ 12,900
Shade Trees	\$ 6,750
Sidewalk from Chanticleer	\$ 31,200
Parking Lot	\$ 200,000
Restrooms	\$ 510,000

How wonderful it is that nobody need wait a single moment before starting to improve the world.

— Anne Frank



Images shown for conceptual purposes as actual elements may vary.
Visit www.santacruzplaygroundproject.org for project updates.

LEO'S HAVEN PLAYGROUND OVERVIEW — 3D MOCKUP

Helena Crawford grew up in an era when there were no support services for special needs children. In fact, in elementary school, teachers actively tried to dissuade her from playing out on the playground for fear she would hurt herself.

Fortunately, her mother encouraged her to do anything she wanted. One of those desires was to become an occupational therapist, which is exactly what she did. Helena spent many years working with children through the California Children Services (CCS) Medical Therapy Unit in Monterey County.

When Tatum's Garden was built in Salinas, CA, she worked with a number of therapists under the direction of Christine Betts, Supervisor of the CCS Medical Therapy Unit in Monterey County, to spearhead an effort to hold therapy sessions at the playground. Helena and the other therapists would meet families at Tatum's Garden to show them how to play with the equipment. These sessions were very positively received by the families.

LEO'S HAVEN will be within one mile of the CCS Medical Therapy Unit office in Santa Cruz. The close proximity of the playground to this service location will allow children who receive therapy services from CCS in Santa Cruz County to have the benefit of experiencing play therapy.



Ammy Erlewine feels that LEO'S HAVEN will be an invaluable resource for connecting families in Santa Cruz County. "When my daughter, Lily, was diagnosed, those first months and years were a whirlwind of specialists appointments, therapy sessions, and paperwork. Often, the only people I interacted with were healthcare providers. Having a playground where Lily could be in her wheelchair and still interact with the environment would have been amazing. It would have provided opportunities to connect with other families having similar experiences. Finding those families is so critical to navigating special-needs parenthood."



Brenda Gutierrez Baeza is a native of Santa Cruz County. Currently, she is taking classes at California State University, Fresno, to be a medical interpreter. She is also providing invaluable service as a translator for LEO'S HAVEN.

When Brenda was an elementary student, she found herself staying inside a lot during recess because the playground was not designed to accommodate her wheelchair. Interaction with her classmates was difficult, which caused her to grow up feeling isolated and without many friends.

Brenda states, "I think LEO'S HAVEN is a genius idea because finally kids will be able to play with everyone else and not feel left out."

We are looking forward to seeing Brenda bring her friends from Grupo Renacer (a special needs support group based in Watsonville) to LEO'S HAVEN once it is built. Someday very soon, children growing up in Santa Cruz County will not have Brenda's experience of frustration and isolation because they will finally have access to play through the inclusive design of LEO'S HAVEN.



Traditional playground equipment typically requires two hands to navigate. This poses a challenge for Amy Lopez's son, Drew, who had a stroke at birth and has limited use of his left arm. Ladders, play structures, and swings can be dangerous—or impossible—for Drew to play on. LEO'S HAVEN will provide an adaptive environment for Drew. "I can breathe a sigh of relief," says Amy, "knowing my child can play safely and independently."



Mariana is looking forward to bringing her daughter, Samantha, to LEO'S HAVEN to play together with family and friends. The playground will allow them to utilize play as therapy, help Samantha develop new skills, and instill the sense of being part of the community.



CONTRIBUTORS

ComarkDirect
STRATEGIES | SOLUTIONS | FULFILLMENT
commercial printing
www.comarkdirect.com

BENJAMIN DESIGNS
print design and layout
www.benjaminsdesigns.com

Neil Simmons PHOTOGRAPHY
photography
www.neilsimmonsphotography.com

- Amy Erlewine
- Charlotte Henderson
- Patricia Potts
- Robert Potts
- Mariah Roberts
- Ernestina Saldana
- Diane Scanlan
- Brad Thornton

SOCIAL MEDIA

f FACEBOOK
Search for us using:
Santa Cruz
Playground Project

t TWITTER
@sc_playground

I am only one,
but I am one.
I cannot do everything,
but I can do something.
And I will not let
what I cannot do
interfere with what I can do.

— Everett Hale

#AllKidsNeedToPlay

donations / sponsorships

- All donations are tax-deductible.
- All monetary gifts are accepted by our fiscal sponsor, Shane's Inspiration—a 501(c)(3) organization.



major sponsorship opportunities

Unique and limited sponsorship opportunities for the following areas:

- Sensory Discovery Garden
- Ages 0–5 Play Area
- Ages 5–12 Play Area
- Primary Entry
- Secondary Entry

EXAMPLE: **Sensory Discovery Garden**

Sponsored by The ABC Company

Components within each major area are also available for sponsorship.

donor recognition

Significant benefactors will be recognized publicly in a designated area within the playground unless a donor requests anonymity.

further questions

If you have any questions or comments regarding LEO'S HAVEN or potential donations/sponsorships, please feel free to contact Tricia Potts directly: 831-706-8760 or potts.tricia@gmail.com.

LEO'S youngest advocates

Eager to have LEO'S HAVEN built as soon as possible, neighborhood children have been busily fundraising. Andrew, Marissa, and Kevin participated in the Human Race walkathon. Cleo set a goal of raising \$1,000 through her Cleo's Cookie Stand. Lauren and Evelyn raised money by selling eggs from their pet chickens. Instead of birthday presents, Abby asked for her family and friends to send donations to the playground. Way to go kids—your dedication to this community is inspiring!



We will send you a tax-deductible receipt and our sincere thanks.

PLEASE REMEMBER TO INCLUDE — NAME · ADDRESS · EMAIL · PHONE



CHECK

Make checks payable to:
SI FPO LEO'S HAVEN

Use the enclosed envelope or mail to:
**SANTA CRUZ PLAYGROUND PROJECT
PO BOX 3709
SANTA CRUZ CA 95063-3709**



CREDIT CARD

Credit card donations may be made online by
visiting our website:

**[www.santacruzplayground
project.org](http://www.santacruzplaygroundproject.org)**



GIFT-IN-KIND

In-kind gifts will be accepted by the County of
Santa Cruz, if this is of interest to your company or
organization as a way to contribute to LEO'S HAVEN.

PLEASE CONTACT
TRICIA POTTS
potts.tricia@gmail.com



#AllKidsNeedToPlay

LEO'S
HAVEN
AT CHANTICLEER PARK

CONTACT AND DONATION INFORMATION
available online at

www.santacruzplaygroundproject.org